



Brought to you as a courtesy of:



Marjorie Crowley  
CoastWise Realty  
Office Phone: 207-338-6005  
[coastwiserealestate.com](http://coastwiserealestate.com)

### Property Details

<b>Appliances Included:</b> Gas Range • Microwave • Refrigerator • Washer	<b>Water:</b> Well Existing on Site
<b>Location:</b> Near Golf Course • Near Public Beach • Neighborhood	<b>Sewer:</b> Septic Existing on Site
<b>Heat System:</b> Direct Vent Heater	<b>Amenities:</b> Furniture Included • Porch
<b>Basement:</b> Crawl Space	<b>Water Heater:</b> Electric
	<b>Roof:</b> Shingle
	<b>Exterior:</b> Vinyl Siding

### Details

<b>Listing ID</b>	1428569
<b># Bedrooms</b>	2
<b>Total Full Baths</b>	1
<b>Total Half Baths</b>	1.0
<b># Rooms</b>	5.0
<b>SqFt Finished Above Grade</b>	744.0
<b>SqFt Finished Below Grade</b>	0.0
<b>SqFt Finished Total</b>	744.0
<b>Year Built</b>	1920
<b>Lot Size Acres +/-</b>	0.07
<b>Full Tax Amount \$</b>	1731.0
<b>Garage</b>	No

### Additional Details

<b>Zoning</b>	Residential	<b>Map</b>	U12
<b>Surveyed</b>	Unknown	<b># Fireplaces</b>	0
<b>Book</b>	3646	<b>Water Frontage</b>	No
<b>Page</b>	342		

### Remarks

With picturesque views of Penobscot Bay and Islesboro, this charming 2-bedroom, 2-bath cottage is nestled in the heart of the historic cottage community of Temple Heights. Furnished and move-in ready, it offers a waterside wraparound porch, a delightful and private backyard living space, a new Rinnai direct vent heater and a drilled well installed in 2012. An easily accessible community path to the shore for swimming, beach combing or kayaking is just steps away and Saturday Cove public boat launch and Bayside Village with its dock, parks and golf club are both close by. An idyllic seaside haven, this irresistible cottage is also the perfect Airbnb rental.

17 High drone.1



17 High St. exterior.1



17 High porch.1



17 High garden



17 High LR.1



17 High LR.6



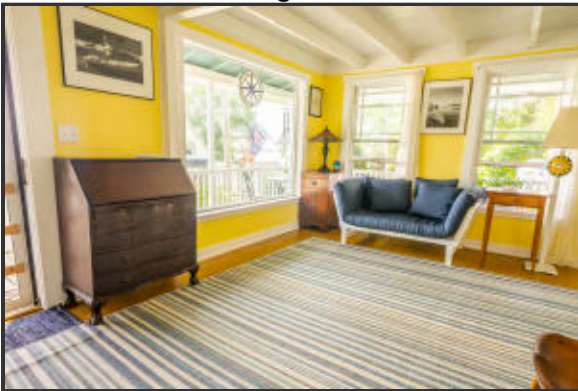
17 High LR.3



17 High LR.4



17 High LR.7



17 High kitchen.3

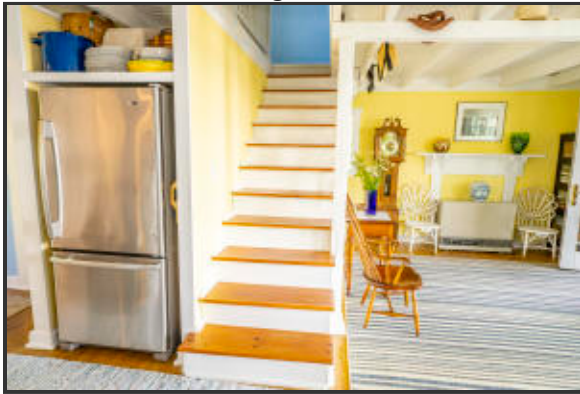
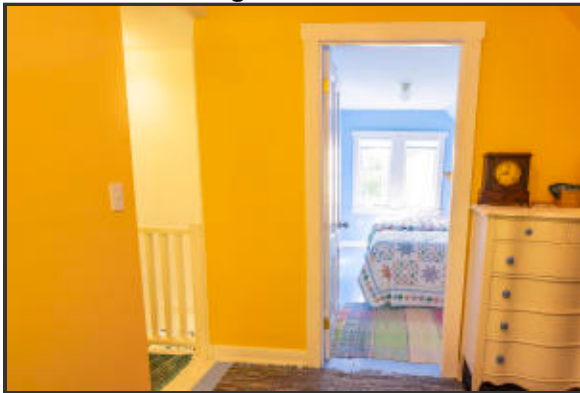
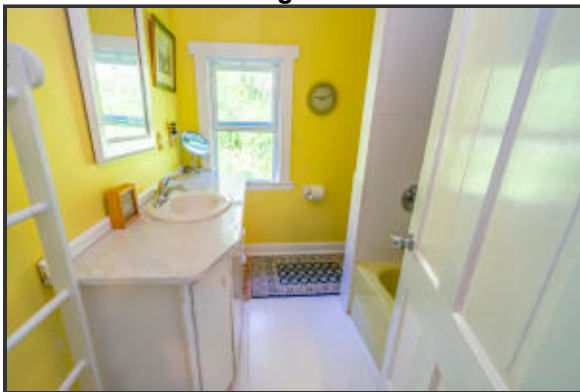
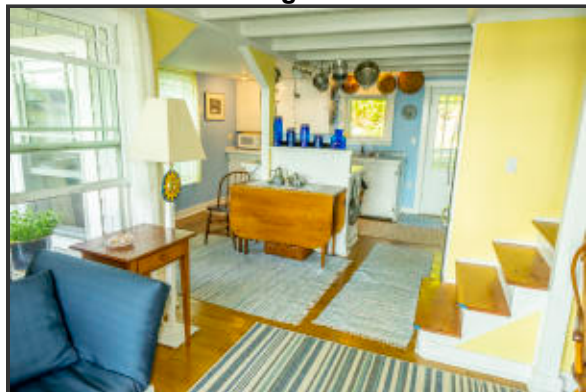


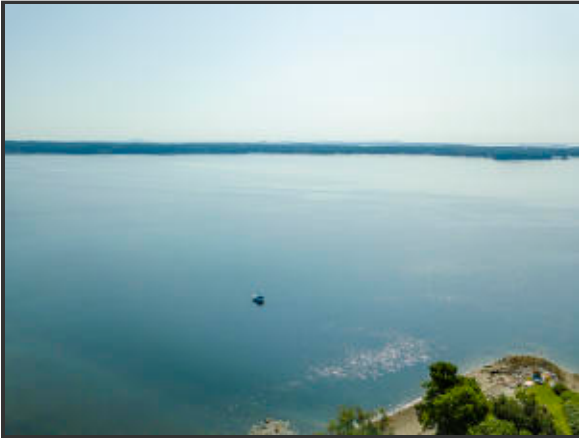
17 High kitchen.1



17 High Kitchen.2



**17 High Stairs****17 High BR.1****17 High Other Room****17 High BR.2 (1024x683)****17 High Bath****17 High LR.2**

**17 High roof****17 High St. porch.2****17 High drone.2****17 High ext.2**